

- NOTES
- ZONING IS "H" (HEAVY INDUSTRIAL).
  - THIS PROPERTY IS NOT LOCATED IN AN AGRICULTURAL DISTRICT.
  - PA LAW REQUIRES THAT ANYONE PLANNING TO UNDERTAKE CONSTRUCTION OF A NEW OR EXISTING INDUSTRIAL FACILITY SHALL FIRST OBTAIN A PERMIT FROM THE PENNSYLVANIA DEPARTMENT OF ENVIRONMENTAL PROTECTION (PA DEP) UNDER THE "PA ONE CALL SYSTEM, INC." (PHONE 1-800-242-1776) NOT LESS THAN THREE (3) OR MORE THAN TEN (10) WORKING DAYS PRIOR TO BEGINNING EXCAVATION OR RELOCATION WORK ON THE PROPERTY.
  - THE PENNSYLVANIA STATE PLANE COORDINATE SYSTEM ON ZONE - NAD 83 ADJUSTMENT IS SUPERSEDED BY BENTLEY ASSOCIATES, INC. "STATE PLANE COORDINATE SYSTEM ADVISORY".
  - TOPOGRAPHIC INFORMATION WAS SUPPLIED BY BENTLEY ASSOCIATES, INC. "STATE PLANE COORDINATE SYSTEM ADVISORY".
  - ALL PROPERTY LINES UNLESS SHOWN OTHERWISE.
  - UTILITY LOCATIONS WERE PROVIDED BY ALLEGHENY POWER, THE PENNSYLVANIA DEPARTMENT OF ENVIRONMENTAL PROTECTION, THE PENNSYLVANIA DEPARTMENT OF TRANSPORTATION AND WERE NOT FIELD LOCATED. THE UTILITIES SHOWN ON THIS PLAN ARE ONLY PROVIDED TO NOT INTENDED TO PROVIDE A COMPLETE REPRESENTATION OF ALL UTILITIES IN THE AREA.
  - WATER MAIN TO BE CONSTRUCTED IN ACCORDANCE WITH THE LATEST FRANKLIN COUNTY GENERAL AUTHORITY SPECIFICATIONS FOR WATER MAIN CONSTRUCTION.
  - PROPOSED 12" WATER MAIN TO BE CONSTRUCTED IN ACCORDANCE WITH THE LATEST PENNSYLVANIA DEPARTMENT OF ENVIRONMENTAL PROTECTION SPECIFICATIONS FOR WATER MAIN CONSTRUCTION.
  - ALL EXISTING DRAINAGE WAYS OTHERWISE REPLACED WITH ADEQUATELY SIZED STORMWATER CONTROL STRUCTURES TO SAFELY CONVEY ALL EXCESS STORMWATER RUNOFF.

LEGEND

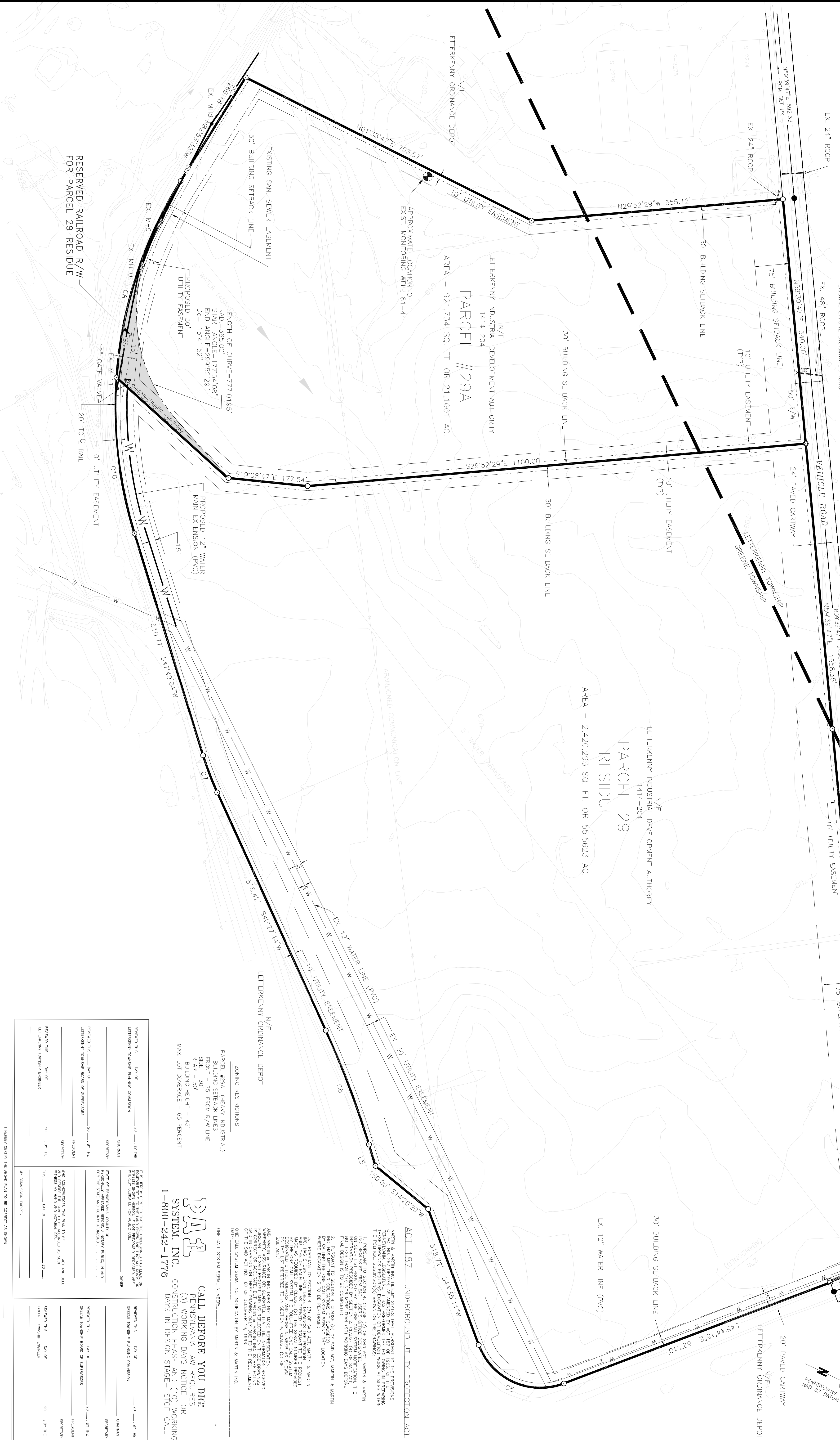
R/S	Railroad Spike
E/W	Existing Right of Way
Ex	Existing Right of Way
P.K.	Point of Beginning
○	Right of Way/Encumbrance Line
+	Right of Way/Encumbrance Line
—	Property Line
—	Conduit Line
—	Sanitary Sewer Line
—	Sanitary Sewer Force Main
—	Water Line
—	Gas Line
—	Telecommunication Line
—	Overhead Electric Line
—	Industrial Waste Sewer Line
—	Stormwater Pipe
—	Utility Pole
—	Sanitary Sewer Manhole

CURVE TABLE

NUMBER	DELTA	RADIUS	ARC	CHORD	BEARING	CHORD BEARING
C1	180°	100.00	100.00	100.00	180°00'00"	180°00'00"
C2	69°59'48"	40.00	62.83	40.00	145°146'13"	135°00'00"
C3	57°48'21"	95.00	95.79	52.41	136°52'34"	126°00'00"
C4	16°49'51"	95.00	27.80	14.05	155°29'04"	144°00'00"
C5	07°23'01"	2017.54	268.21	134.30	154°41'13"	144°00'00"
C6	07°23'01"	682.46	87.62	43.87	144°08'24"	134°00'00"
C7	28°17'06"	937.46	460.89	83.18	151°28'13"	144°00'00"
C8	33°17'06"	607.00	303.50	83.18	151°28'13"	144°00'00"
C9	21°03'18"	1827.86	355.89	174.76	155°24'53"	144°00'00"

LINE TABLE

NUMBER	DIRECTION	DISTANCE
L1	N45°52'42"E	27.60
L2	S50°59'47"W	179.10'
L3	S57°04'15"E	48.89'
L4	S48°04'43"W	48.18'
L5	N05°52'40"E	192.59'



REQUIRED THIS DATE OF THE LETTERKENNY TOWNSHIP PLANNING COMMISSION

REQUIRED THIS DATE OF THE LETTERKENNY TOWNSHIP BOARD OF SUPERVISORS

REQUIRED THIS DATE OF THE LETTERKENNY TOWNSHIP BOARD

IN COMMISSION OFFICES

REQUIRED THIS DATE OF THE LETTERKENNY TOWNSHIP PLANNING COMMISSION

REQUIRED THIS DATE OF THE LETTERKENNY TOWNSHIP BOARD OF SUPERVISORS

REQUIRED THIS DATE OF THE LETTERKENNY TOWNSHIP BOARD

IN COMMISSION OFFICES

**PARCEL #29A (HEAVY INDUSTRIAL)**

BUILDING SETBACK LINES

FRONT - 75' FROM R/W LINE

REAR - 50'

BUILDING HEIGHT - 45'

MAX. LOT COVERAGE - 65 PERCENT

**ZONING RESTRICTIONS**

ACT 187 UNDERGROUND UTILITY PROTECTION ACT

**ACT 187 UNDERGROUND UTILITY PROTECTION ACT**

MARTIN & MARTIN INC. HEREBY CERTIFIES THAT, PURSUANT TO THE PROVISIONS OF THE UNDERGROUND UTILITY PROTECTION ACT, IT HAS PERFORMED THE FOLLOWING IN PREPARING THIS SUBDIVISION PLAN: (1) THE LOCATION OF ALL EXISTING UTILITIES (INCLUDING BUT NOT LIMITED TO WATER, SEWER, GAS, TELECOMMUNICATION, AND POWER) HAS BEEN DETERMINED AND SHOWN ON THE DRAWINGS; (2) THE LOCATION OF ALL EXISTING UTILITIES (INCLUDING BUT NOT LIMITED TO WATER, SEWER, GAS, TELECOMMUNICATION, AND POWER) HAS BEEN DETERMINED AND SHOWN ON THE DRAWINGS; (3) THE LOCATION OF ALL EXISTING UTILITIES (INCLUDING BUT NOT LIMITED TO WATER, SEWER, GAS, TELECOMMUNICATION, AND POWER) HAS BEEN DETERMINED AND SHOWN ON THE DRAWINGS; (4) THE LOCATION OF ALL EXISTING UTILITIES (INCLUDING BUT NOT LIMITED TO WATER, SEWER, GAS, TELECOMMUNICATION, AND POWER) HAS BEEN DETERMINED AND SHOWN ON THE DRAWINGS; (5) THE LOCATION OF ALL EXISTING UTILITIES (INCLUDING BUT NOT LIMITED TO WATER, SEWER, GAS, TELECOMMUNICATION, AND POWER) HAS BEEN DETERMINED AND SHOWN ON THE DRAWINGS; (6) THE LOCATION OF ALL EXISTING UTILITIES (INCLUDING BUT NOT LIMITED TO WATER, SEWER, GAS, TELECOMMUNICATION, AND POWER) HAS BEEN DETERMINED AND SHOWN ON THE DRAWINGS; (7) THE LOCATION OF ALL EXISTING UTILITIES (INCLUDING BUT NOT LIMITED TO WATER, SEWER, GAS, TELECOMMUNICATION, AND POWER) HAS BEEN DETERMINED AND SHOWN ON THE DRAWINGS; (8) THE LOCATION OF ALL EXISTING UTILITIES (INCLUDING BUT NOT LIMITED TO WATER, SEWER, GAS, TELECOMMUNICATION, AND POWER) HAS BEEN DETERMINED AND SHOWN ON THE DRAWINGS; (9) THE LOCATION OF ALL EXISTING UTILITIES (INCLUDING BUT NOT LIMITED TO WATER, SEWER, GAS, TELECOMMUNICATION, AND POWER) HAS BEEN DETERMINED AND SHOWN ON THE DRAWINGS; (10) THE LOCATION OF ALL EXISTING UTILITIES (INCLUDING BUT NOT LIMITED TO WATER, SEWER, GAS, TELECOMMUNICATION, AND POWER) HAS BEEN DETERMINED AND SHOWN ON THE DRAWINGS.

**CALL BEFORE YOU DIG!**

PENNSYLVANIA LAW REQUIRES (3) WORKING DAYS NOTICE OR CONSTRUCTION PHASE AND (10) WORKING DAYS IN DESIGN STAGE - STOP CALL

1-800-242-1776

DATE: 2/28/02

SCALE: 1" = 100'

DRAWING NO. 10 of 1

**M&M** martin and martin incorporated

phone: (717) 37 south main street • suite A 264-6759 chambersburg, pennsylvania . 17201

PROJ. NO. 1120.8 DWN. BY: DB/VHG

DSN. BY: JM CHR. BY: JM

SCALE: 1" = 100'

GREENE & LETTERKENNY TOWNSHIPS FRANKLIN COUNTY

**FINAL PARCEL 29A SUBDIVISION PLAN**

PENNSYLVANIA

**LETTERKENNY INDUSTRIAL DEVELOPMENT AUTHORITY**

NO.	REVISION	DATE	SEAL

**SEAL**

**DAVID REYNOLDS**

Surveyor No. 23746

1998